

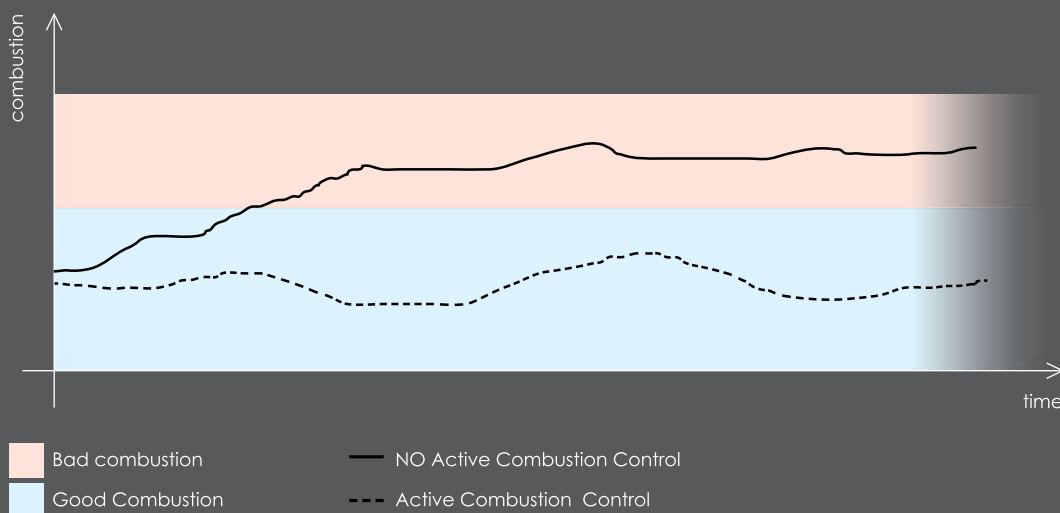
B&P ACTIVE COMBUSTION CONTROL

Active Control System Solutions
based on process feedback
for a better quality of combustion

One month after regular servicing, are we sure that the quality of combustion is still good? If we dealt with cars, the answer might be positive! Now all vehicles (Euro 3 or more) are originally equipped with combustion control based on process feedback, self-diagnostic and reporting capability (EOBD).

That's the expected road map also for the boiler market!

QUALITY OF COMBUSTION



After years of research in its advanced laboratories, in 2008 Bertelli & Partners presented its own active combustion control system for gas appliances based on a robust and reliable process feedback (DINAMICO) and a suitable gas valve (SGV).

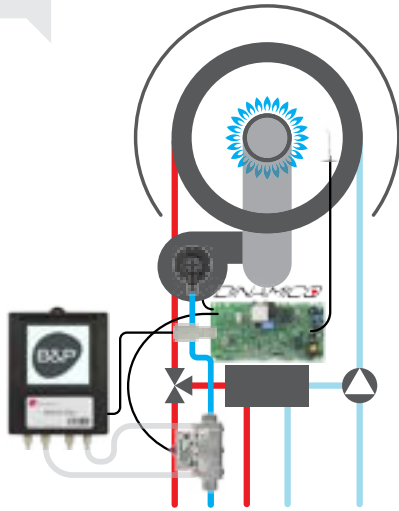
Seven years later the figures, coming from the wide number of gas appliances equipped, confirm that the vision was correct.

Through hard work in terms of combustion optimization and specific patents, now B&P Active combustion control system can be applied to several different types of standard and high efficiency appliances (burners, heat exchangers, etc.), increasing the functions and decreasing the design complexity.

DINAMICO - Through electronics (HW & FW) a standard electrode becomes the process feedback sensor.

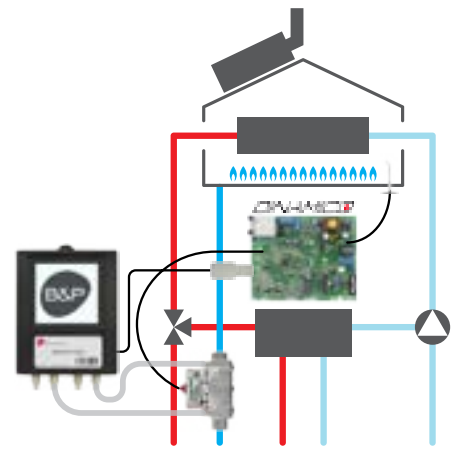
ACTIVE
COMBUSTION
CONTROL

PREMIX



ACTIVE
COMBUSTION
CONTROL

ATMO



+ SAFETY

- SAFE BEHAVIOUR IN CASE OF WRONG GAS FAMILY SUPPLY
- ADVANCED CO CONTROL
- BLOCKAGE PIPE DETECTION
- EXHAUST RECIRCULATION DETECTION
- SELF-DIAGNOSTIC AND REPORTING CAPABILITY

+ PERFORMANCE

- COMBUSTION SUPERVISION WITH DINAMICO
- COMBUSTION DRIFT CONTROL
- NO MECHANICAL SETTINGS
- FULL AUTOMATIC SETTINGS THROUGH THE TESTING BENCH
- SAFE AND EASY FIRST BOILER OPERATION WITH LOW MAINTENANCE REQUIRED
- GAS FAMILY TYPE SETTINGS THROUGH PARAMETERS (NO HW CHANGE)
- GAS ADAPTIVITY
- WIDE MODULATION RANGE
- SUITABLE TO INCREASE BURNER LIFETIME AND DECREASE OVERALL NOISE LEVEL

+ SYSTEM COST SAVING

- LOWER NUMBER OF COMPONENTS NEEDED
- EASIER DESIGN OF THE APPLIANCE